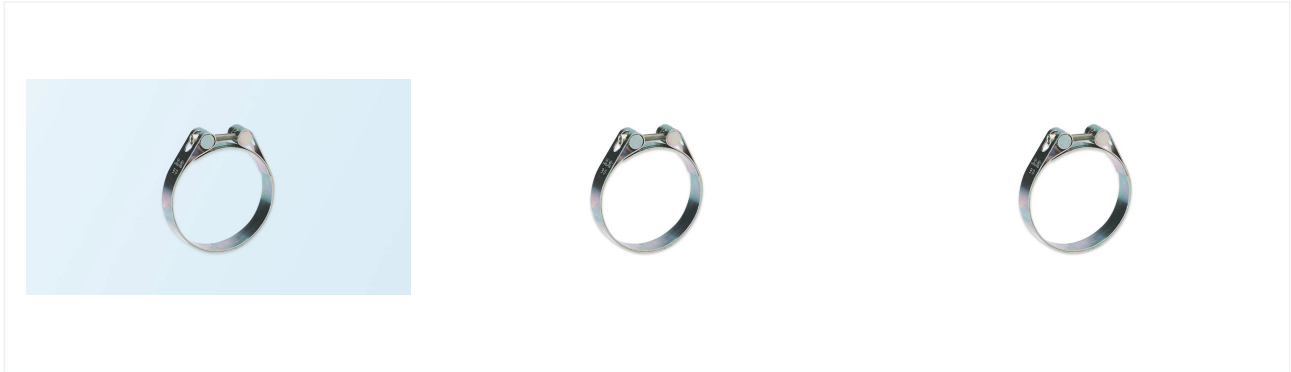


ACCESSORIES

Pa-Ri slangeklemme-systeem

Pa-Ri hose clamp system - wide range dimensions and one-handed mounting



Pa-Ri is a German hose clamp system designed for quick one-handed mounting with a simple screw mechanism. The construction allows large adjustment range per dimension, reducing the number of stock sizes. Frequently used in industrial installations where mounting speed is priority.

Technical specifications

Material	Stainless / galvanised steel
Wall construction	Pa-Ri clamp with one-handed mounting
Cut to length	No
Manufacturer SKU	6170

Standards and compliance

REACH, RoHS

Dimensions and ordering

The hose is supplied in 3 standard sizes from inner Ø 20.0 mm to 160.0 mm. Each size has its own article number. Standard roll length is typically 10 m, and the hose can be cut to length.

Inner Ø [mm]	Outer Ø [mm]	Weight [kg/m]	Article no.
20	40	0.022	6170020040
60	90	0.045	6170060090
120	160	0.085	6170120160

The table shows the product's standard dimensions. Weight column is per piece.

Other Particulair microsities

We build specialised microsities for critical industries. Each site provides in-depth product data, documentation and expert guidance for the domain it covers.

particulair.eu/ex-vac	ATEX and ACD vacuum cleaners for explosion hazard zones
particulair.eu/vace	Nozzles and accessories for critical environments
particulair.eu/life-science	Vacuums for pharma and cleanroom
particulair.eu/hardo	Explosion-protected electrical Ex-equipment

Contact and advisory

Particulair

Højtoften 12
2690 Karlslunde, Denmark
CVR: 34129894

Phone: (+45) 70 23 12 03
E-mail: sales@particulair.com
Web: particulair.eu

Product page: particulair.eu/flexcore/en/accessories/schlauchschelle-pa-ri/

SMARTER THINKING • BETTER WORKING

This datasheet is generated automatically from Particulair product data. All specifications are taken from the manufacturer's factsheet and are subject to change without notice. Prices and availability provided on request.